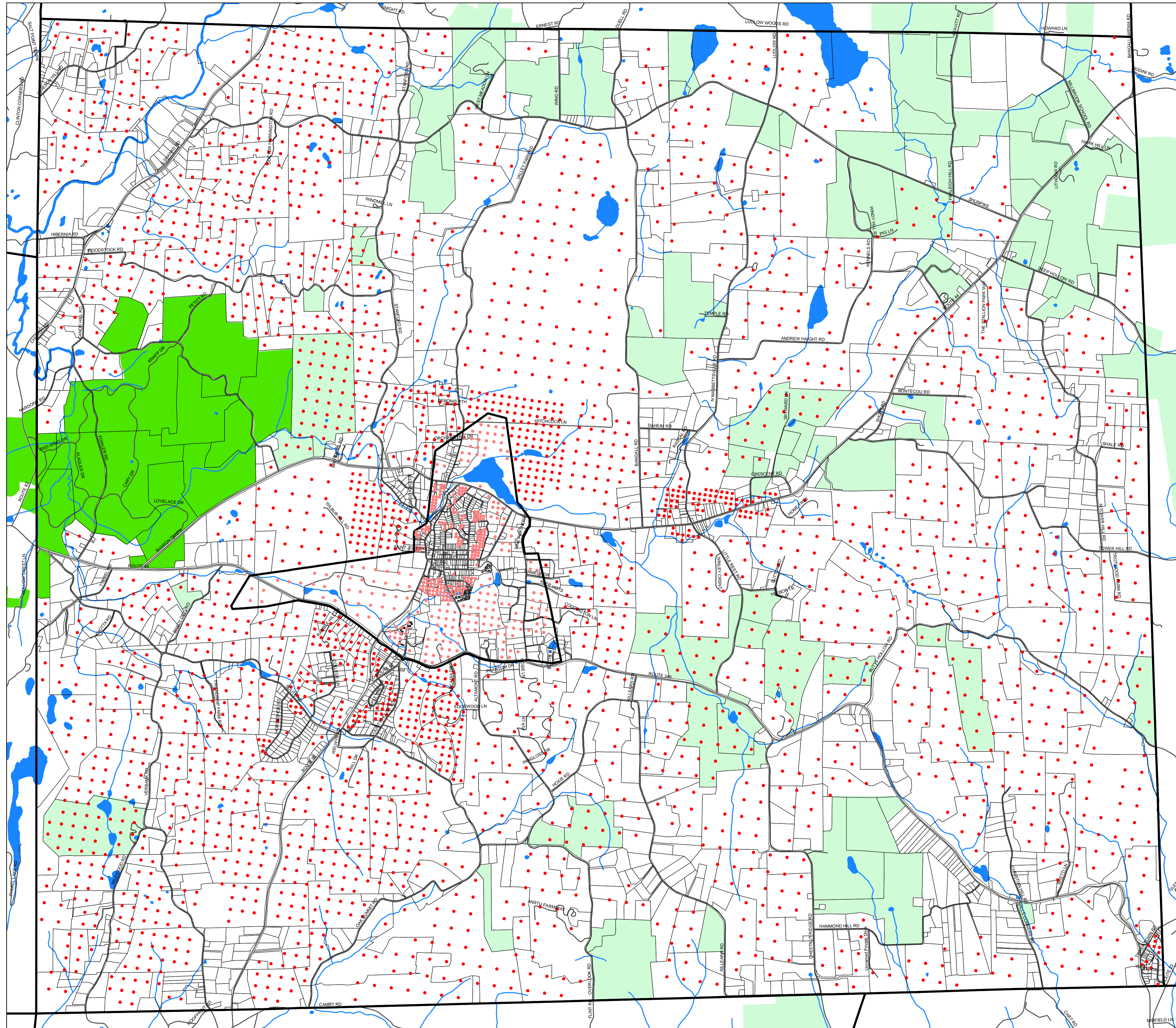


TOWN OF WASHINGTON Dutchess County, New York

BUILD OUT ANALYSIS



Legend

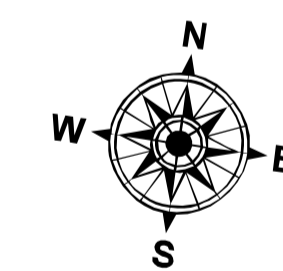
- Tax Parcels
- Roads
- Municipalities
- Streams
- Water Bodies

Easement information from
Dutchess Land Conservancy (DLC)
last updated September 2006

- DLC Easements
- Conservation Organizations

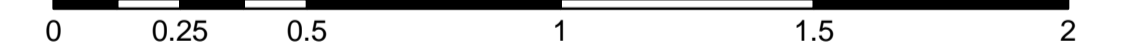
Buildout analysis 2001-2005;
some parcels have added easements
since the analysis was done.

- One dot equals one potential
new dwelling unit (DU)



1:24,000

Miles



DATA SOURCES:
Tax Parcels: Originated and maintained by Dutchess County, 2006.
Roads: Edited and maintained by Dutchess County Department of Emergency Response, 2004.
Municipal Boundaries: Originated and maintained by Dutchess County Real Property Tax Services, 2005.
Surface Water Bodies & Streams: Digitized by Dutchess County Environmental Management Council based on the New York State Department of Conservation Biological Survey Series Maps, Published 1991, edited 1999.
Slope slopes: Derived from USGS 10-meter digital elevation model (DEM), 2001.
Protected Lands and Conservation Easements: Dutchess Land Conservancy, April 2005.
Build Out Analysis: Dutchess County Environmental Management Council - Town of Washington, 2002; Village of Millbrook, 2005.
Projection: State Plane, New York East, FIPS Zone 3101, Datum NAD83

GIS Lab, Environment Program
Cornell Cooperative Extension Dutchess County
September, 2006