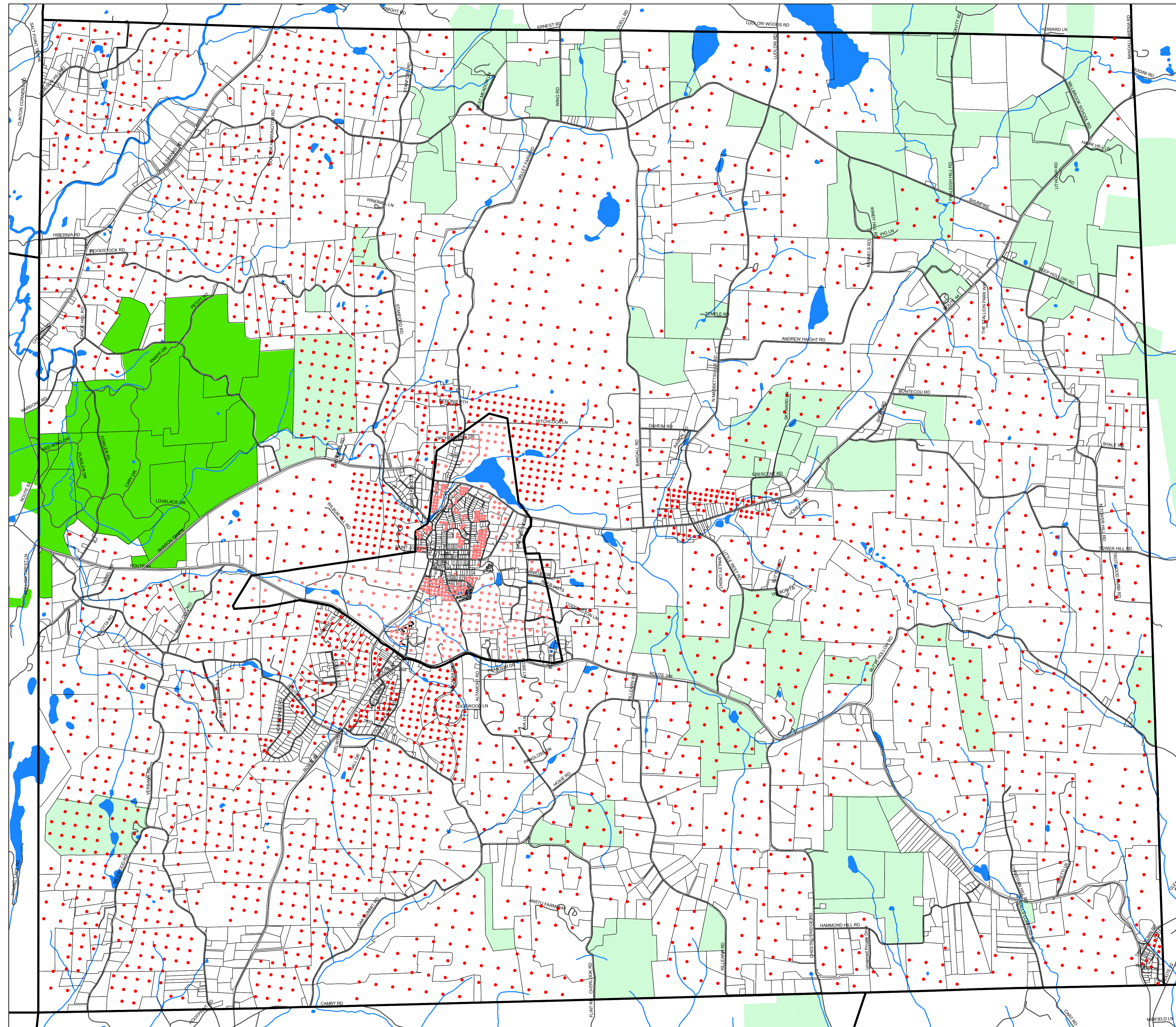


TOWN OF WASHINGTON Dutchess County, New York

BUILD OUT ANALYSIS



Legend

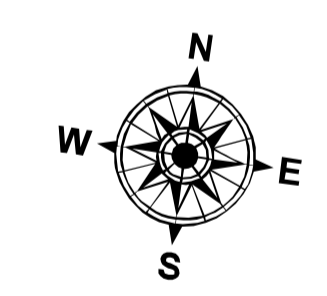
- Tax Parcels
- Roads
- Municipalities
- Streams
- Water Bodies

Easement information from Dutchess Land Conservancy (DLC) last updated September 2006

- DLC Easements
- Conservation Organizations

Buildout analysis 2001-2005; some parcels have added easements since the analysis was done.

- One dot equals one potential new dwelling unit (DU)



1:24,000
Miles



DATA SOURCES:
 Tax Parcels: Originated and maintained by Dutchess County, 2006.
 Roads: Edited and maintained by Dutchess County Department of Emergency Response, 2006.
 Municipal Boundaries: Originated and maintained by Dutchess County Real Property Tax Services, 2005.
 Surface Water Bodies & Streams: Digitized by Dutchess County Environmental Management Council based on the New York State Department of Conservation Biological Survey Series Maps, Published 1991, edited 1999.
 Steep slopes: Derived from USGS 10-meter digital elevation model (DEM), 2001.
 Protected Lands and Conservation Easements: Dutchess Land Conservancy, April 2005.
 Build Out Analysis: Dutchess County Environmental Management Council - Town of Washington, 2002; Village of Millbrook, 2005.
 Projection: State Plane, New York East, FIPS Zone 3101, Datum NAD83

GIS Lab, Environment Program
 Cornell Cooperative Extension Dutchess County
 September, 2006